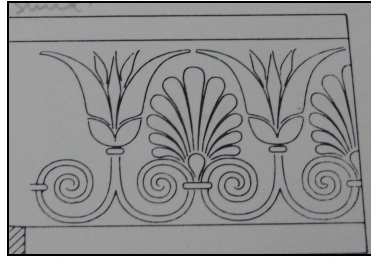


LEVHA 20



Figür 1. Panionion



Figür 2. Menderes Magnesia



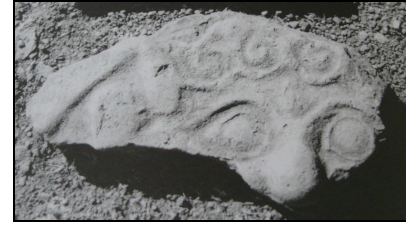
Figür 3. Erythrai



Figür 4. Klazomenai



Figür 5. Lampsakos



Figür 6. Gargara



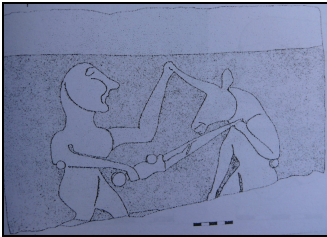
Figür 7. Perkote



Figür 8. Apollon Smintheus Kutsal Alanı



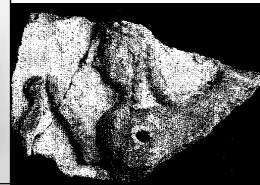
Figür 9. Eskişehir Gökçe-Kısıkköy



Figür 10-11. Emircik/Yaslanbayır Höyüğü



Figür 12-13. Soli-Pompeiopolis



Figür 14-15. Soli-Pompeiopolis

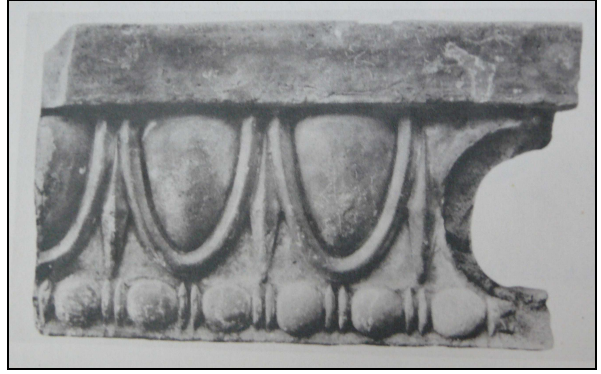


Figür 16. Samsun Köyiçi Tepesi

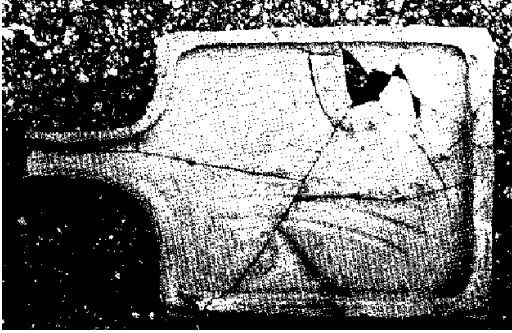
LEVHA 21



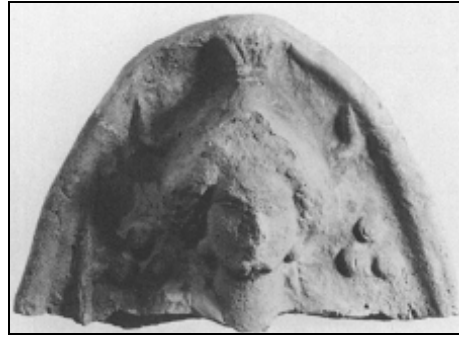
Figür 1. Sinope



Figür 2. Sinope



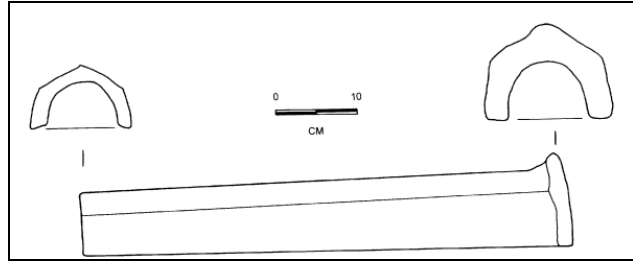
Figür 3. Sardeis



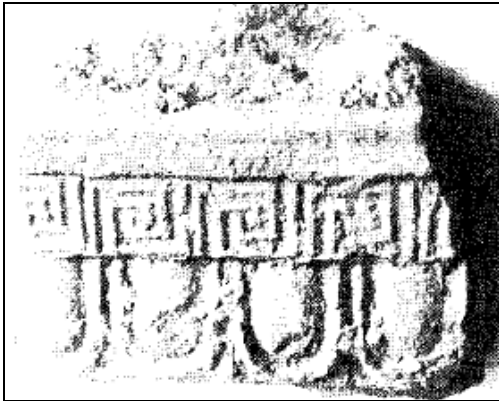
Figür 4. Ilion



Figür 5. Assos



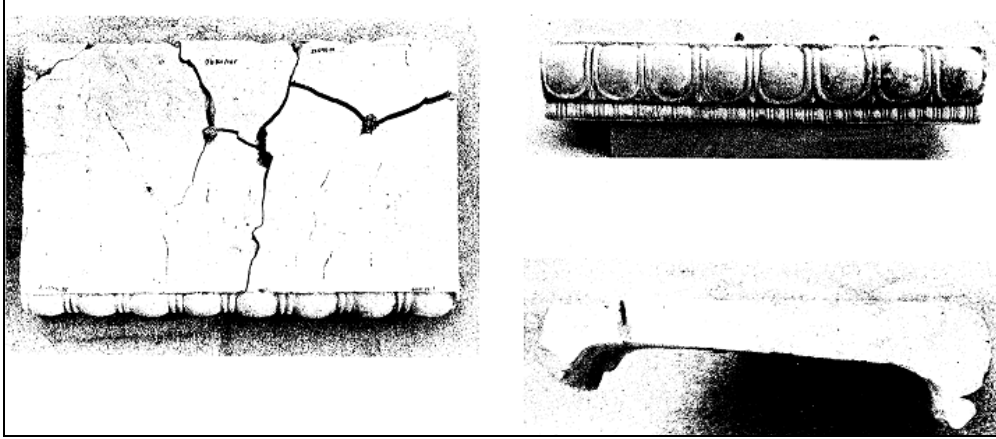
Figür 6. Gordion



Figür 7. Kyme



Figür 8. Alabanda



Figür 1. Histria'dan Ion kymationlu taç kuşağı



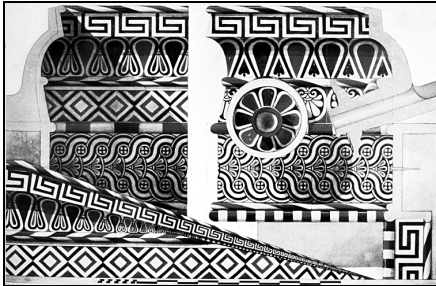
Figür 2. Khios'dan saçaklık kiremidi parçası



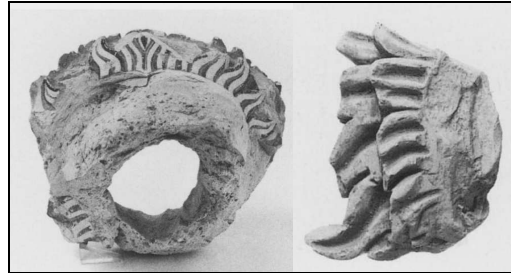
Figür 3. Lesbos'dan antefiks



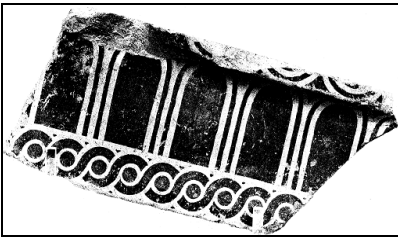
Figür 4. Thasos'dan antefiks



Figür 5. Olympia'dan mimari terrakottalar



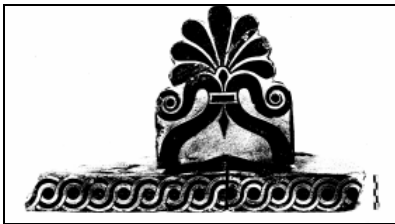
Figür 6. Korinthos'dan aslan başı çörtlen parçaları



Figür 7. Atina'dan eğimli sima parçası



Figür 8. Delphi'den eğimli sima parçası



Figür 9. Halai'den antefiks ve saçaklık kiremidi



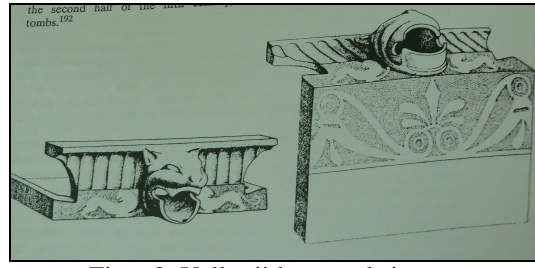
Figür 10. Atina agorasından gorgon başı antefiks

ANADOLU DIŞI ARKAİK DÖNEM MİMARİ TERRAKOTTA BULUNTULARI

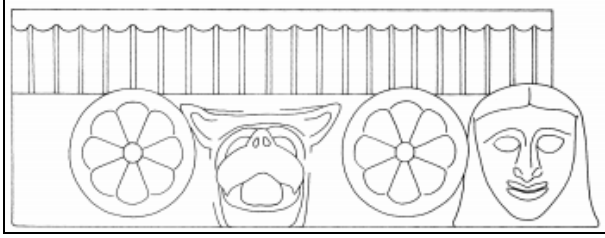
LEVHA 23



Figür 1. Regia'dan yan al sima



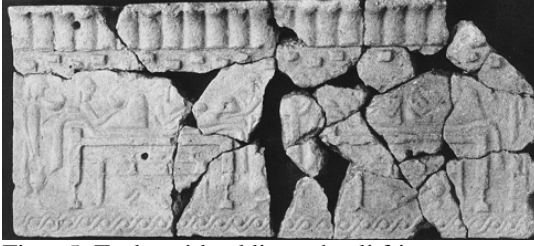
Figür 2. Velletri'den yan al sima



Figür 3. Toskana'dan yan al sima



Figür 4. Paestum'dan köşe siması ve akroter



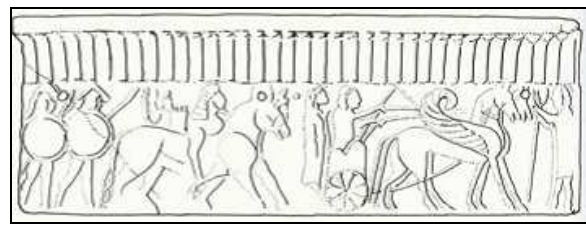
Figür 5. Toskana'dan kline sahneli friz



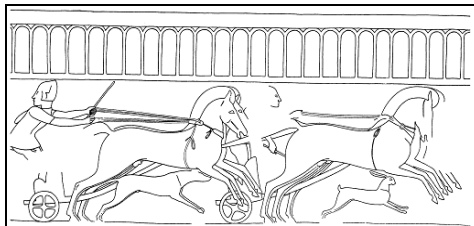
Figür 6. Toskana'dan at yarış sahneli friz



Figür 7. Akguarossa'dan kline sahneli friz



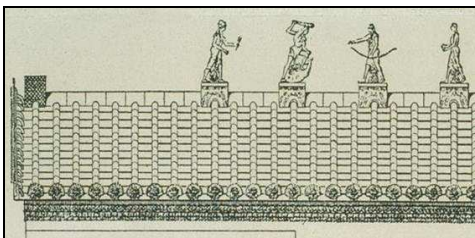
Figür 8. Akguarossa'dan tanrılar sahneli friz



Figür 9. Velletri'den at arabası yarış sahneli friz



Figür 10. Morgantina'dan boğa betimli friz



Figür 11. Veii Portonaccio'da pişmiş toprak heykeller



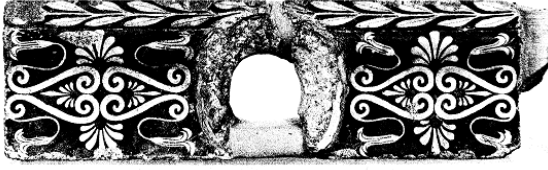
Figür 12. Caere'den



Figür 13. Lanuvium'dan

ANADOLU DIŞI ARKAİK DÖNEM MİMARİ TERRAKOTTA BULUNTULARI

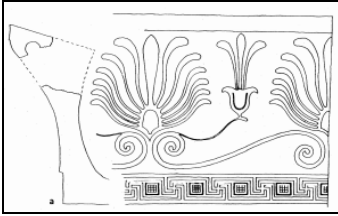
LEVHA 24



Figür 1. Atina'dan



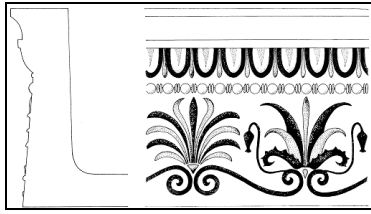
Figür 2. Korinth'den



Figür 3. Kalapodi'den



Figür 4. Delphi'den



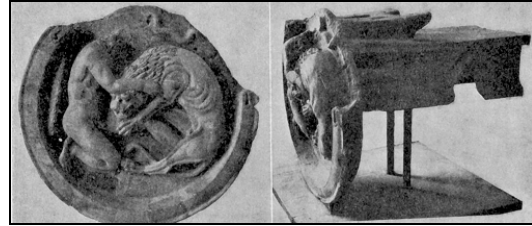
Figür 5. Herakleia'dan



Figür 6. Elea'dan



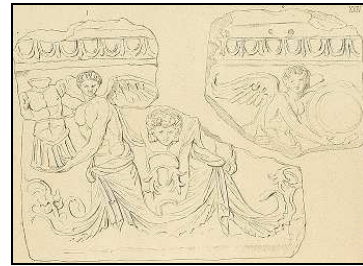
Figür 7. Roma'dan figürlü eğimli sima



Figür 8. Fratte di Salerno'dan



Figür 9. Campana figürlü friz plakaları



Figür 10. Pompeii'den figürlü friz



Figür 11. Samos'dan antefiks



Figür 12. Chieti

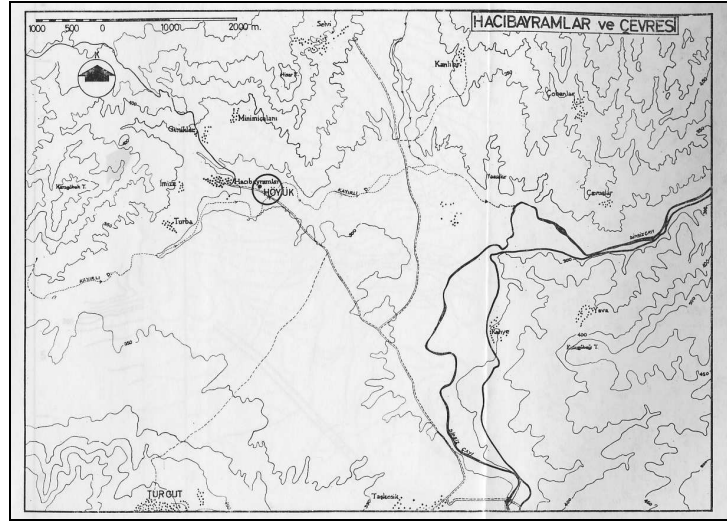


Figür 13. Tarentum



Figür 14. Minturnae

ANADOLU DIŐI ARKAİK DÖNEM SONRASI MİMARI TERRAKOTTA BULUNTULARI



Figür 1. Hacibayramlar ve çevresini gösteren harita



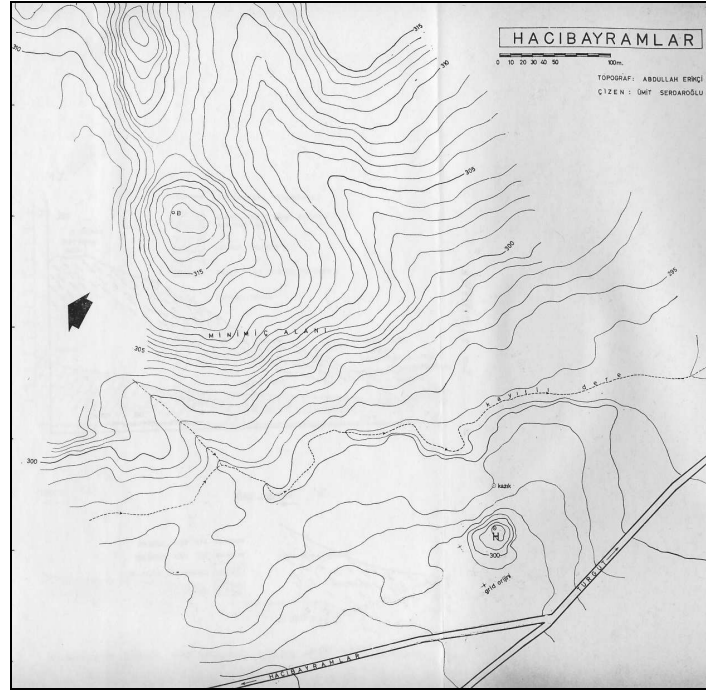
Figür 2. Höyüğün kuzeybatıdan genel görünüşü



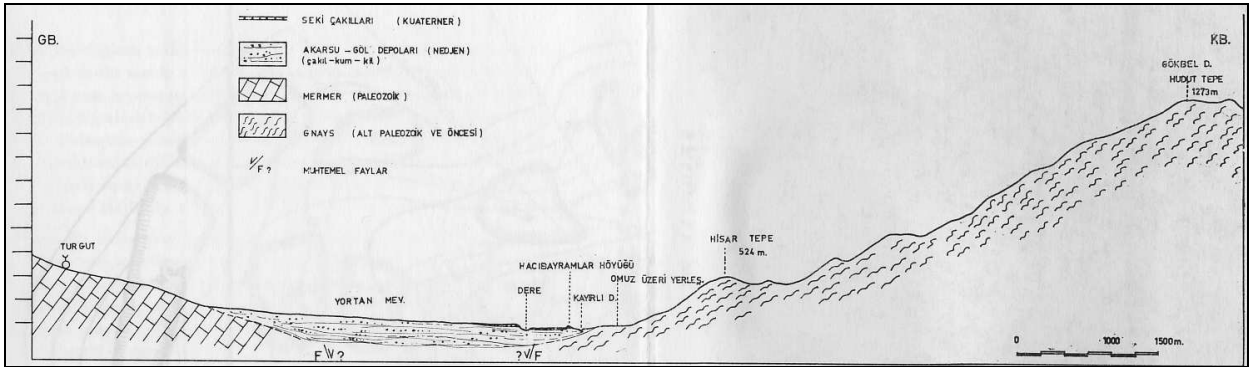
Figür 3. Höyüğün kuzeybatıdan görünüşü

HACIBAYRAMLAR HÖYÜĞÜ VE ÇEVRESİ

LEVHA 26



Figür 1. Hacibayramlar ve çevresinin topografik haritası

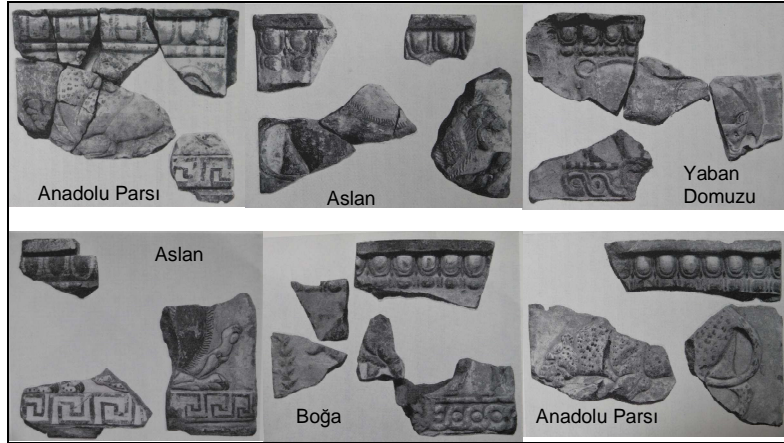


Figür 2. Hacibayramlar ve çevresinin kuzey-güney yönlü jeolojik kesiti



Figür 3. Höyük üzerindeki duvar kalıntıları

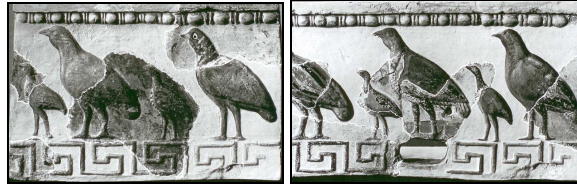
HACIBAYRAMLAR HÖYÜĞÜ VE ÇEVRESİ



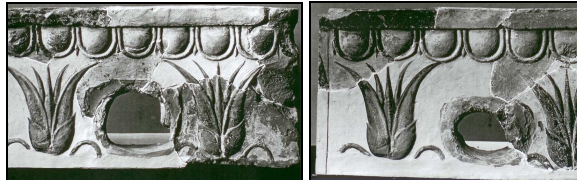
Figür 1. Åkerström'ün kitabındaki fotoğraflar



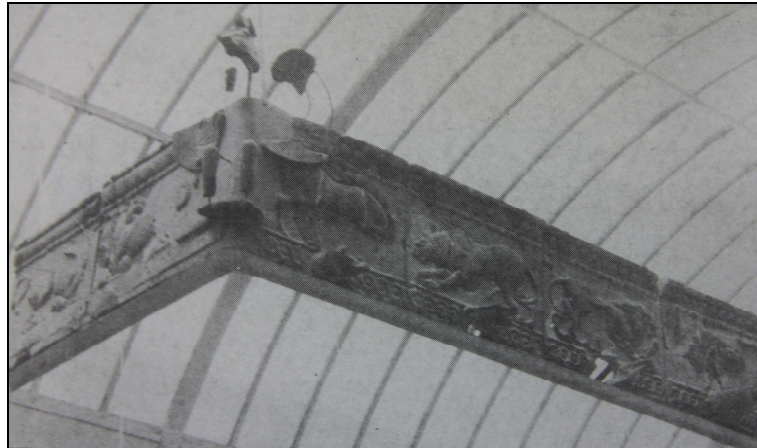
Figür 2-4. 1974 yılında birleştirilmiş 1 No.lu Yapı simalarından örnekler



Figür 5-6. 1974 yılında birleştirilmiş 2 No.lu Yapı simalarından örnekler

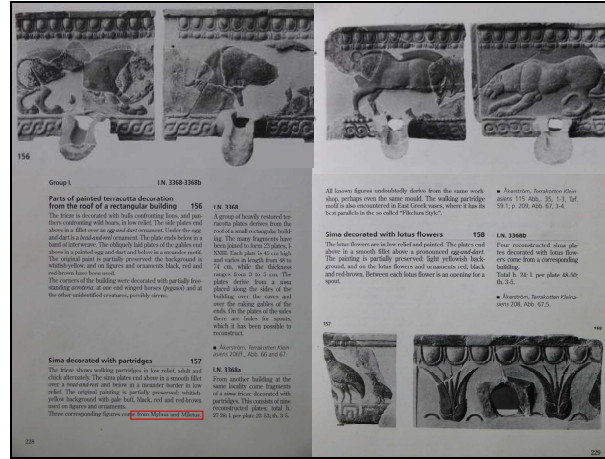


Figür 7-8. 1974 yılında birleştirilmiş 3 No.lu Yapı simalarından örnekler



Figür 9. 1 No.lu Yapı simaları sergilenirken

LEVHA 28



Figür 1. Müze katalogundaki fotoğraflar



Figür 2. NY Carlsberg Glyptotek Müzesi deposundaki Hacıbayramlar mimari terrakottaları

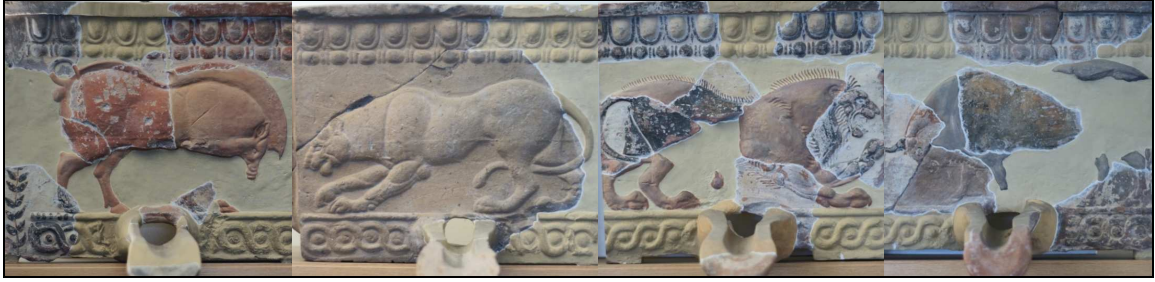


Figür 3-4. NY Carlsberg Glyptotek Müzesi sergideki Hacıbayramlar mimari terrakottaları



Figür 5. NY Carlsberg Glyptotek Müzesi deposunda çalışma yaparken

HACIBAYRAMLAR MİMARİ TERRAKOTTALARI GENEL



Figür 1. 1 No.lu Yapı yanal simaları üzerindeki hayvan mücadele sahnesi



Figür 2. 1 No.lu Yapı yanal simaları üzerinde aslan-boğa mücadelesi



Figür 3. 1 No.lu Yapı yanal simaları üzerinde Anadolu Parsı – Yaban Domuzu mücadelesi

HACIBAYRAMLAR 1 NO.LU YAPI YANAL SİMLER